

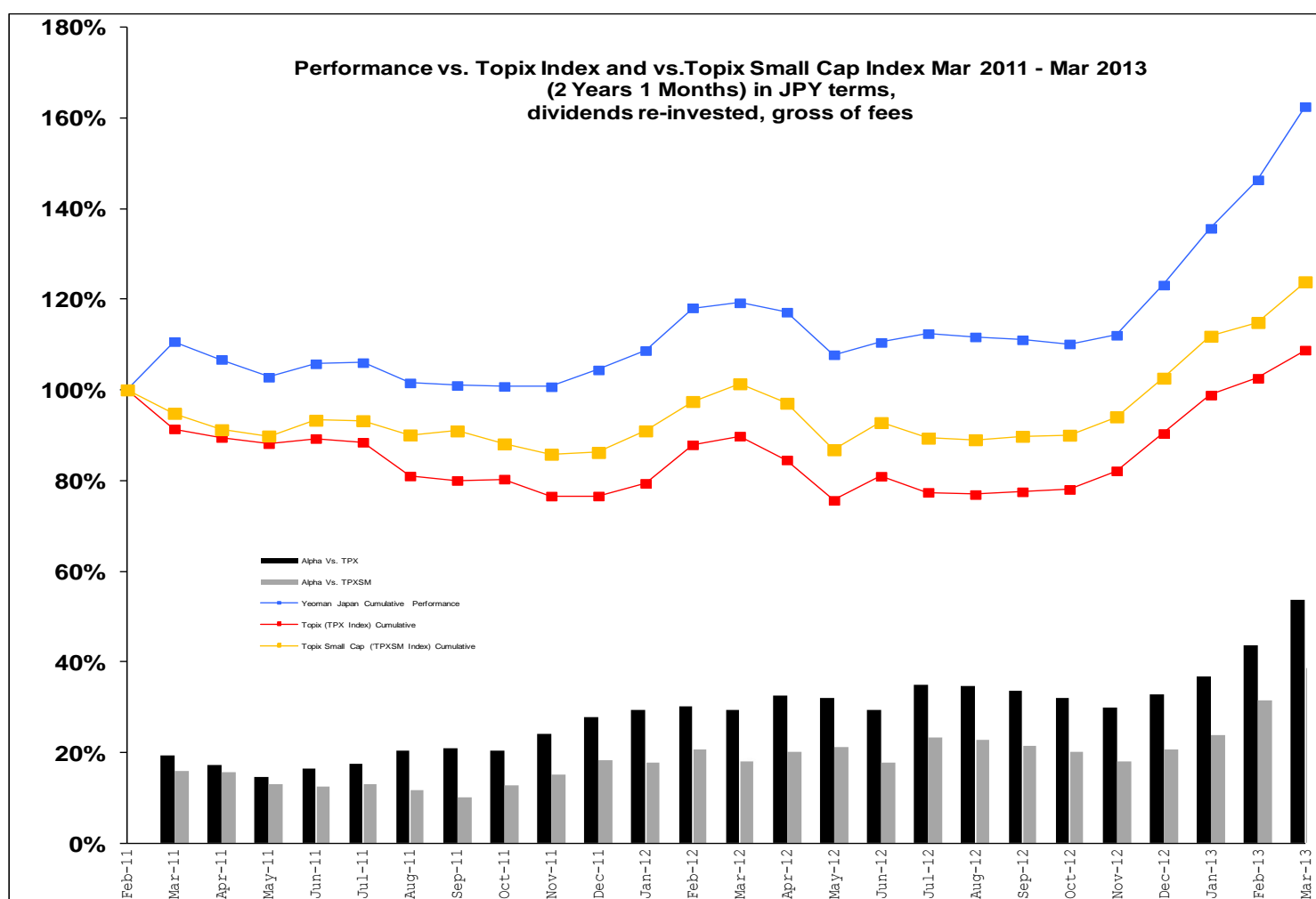
YEOMAN VALUE JAPAN FUND

At 29 Mar 2013
Total Value of Fund:
¥174,061,749

Performance: 2yr 1mo ending 29Mar13

Period	Fund	Index		Out/Under Performance	
		Topix (TPX)	Topix Small Cap (TPXSM)	Vs. TPX	Vs. TPXSM
CAGR (p.a.)	26.23% p.a.	4.12% p.a.	10.81% p.a.	+22.11% p.a.	+15.42% p.a.
Cumulative Performance From Mar11 to Mar13 (2Yr 1mo)	62.47%	8.77%	23.85%	+53.70%	+38.61%
Mar 2013	11.04%	6.05%	7.83%	+4.99%	+3.21%
YTD 2013	31.96%	20.34%	20.74%	+11.62%	+11.23%
Historical Performance					
Jan12 to Dec12	17.93%	18.01%	19.03%	-0.08%	-1.10%
Mar11 to Dec11	4.40%	-23.41%	-13.81%	+27.81%	+18.21%

Note: In YEN terms, gross of fees, dividends re-invested.



Equities/Cash Allocations	Portfolio Valuations (trailing)
Equities 99.14% Cash 0.86%	PE 10.53x P/B 0.57x Dividend Yield 2.60% p.a. ROE 5.96% (1 yr) 6.68% (5 yrs average) Weighted Ave Mkt Cap ¥\$11.46bn

